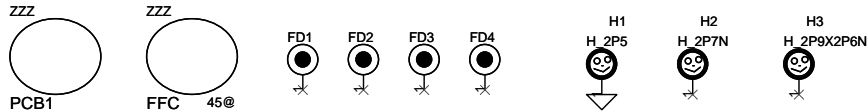


COMPAL CONFIDENTIAL

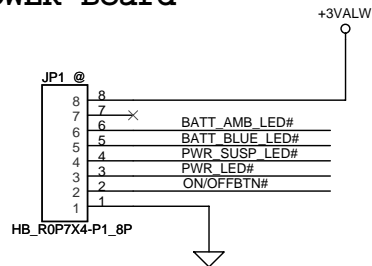
MODEL NAME: Q5LJ1
PCB NAME: LS-8201P PWR/B
COMPAL P/N: DA20000TK00
REVISION: 0.1
DATE: 2011/10/19



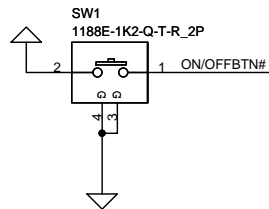
Dual Amber+Blue
LTST-S115TBKF-CA (SC50000C500)
Vf @ 5 mA :
UD5: 1.7 ~ 2.3V
(3.3-1.7)/300=5.71 mA
(3.3-2.3)/300=3.57 mA
R min: 100 ohm
R max 700 ohm
CB5: 2.65~3.05V
(3.3-2.65)/50=13.00 mA
(3.3-3.05)/100=5.0 mA
R min: 50 ohm
R max:475 ohm

100 1% :SD034100080 120 5% :SD028120080
150 1% :SD034150080 560 5% :SD028560080
301 1% :SD034301080 200 5% :SD028200080
680 1% :SD034680080

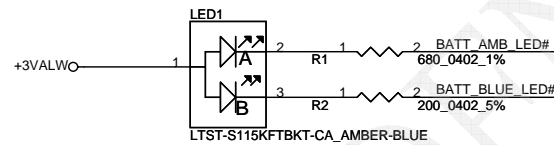
POWER Board



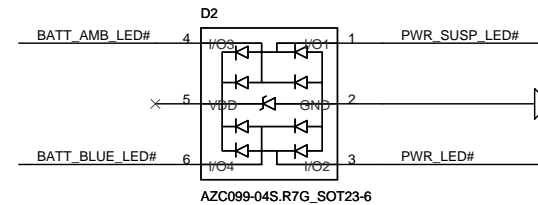
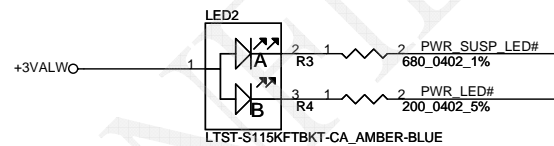
Powe Button



Battery LED



Power LED



Security Classification		Compal Secret Data		Compal Electronics, Inc.	
Issued Date	2011/07/22	Deciphered Date	2012/07/12	Title	
THIS SHEET OF ENGINEERING DRAWING IS THE PROPRIETARY PROPERTY OF COMPAL ELECTRONICS, INC. AND CONTAINS CONFIDENTIAL AND TRADE SECRET INFORMATION. THIS SHEET MAY NOT BE TRANSFERRED FROM THE CUSTODY OF THE COMPETENT DIVISION OF R&D DEPARTMENT EXCEPT AS AUTHORIZED BY COMPAL ELECTRONICS, INC. NEITHER THIS SHEET NOR THE INFORMATION IT CONTAINS MAY BE USED BY OR DISCLOSED TO ANY THIRD PARTY WITHOUT PRIOR WRITTEN CONSENT OF COMPAL ELECTRONICS, INC.				Size Custom	Rev A
				Document Number	405NZL
				Date:	Monday, February 13, 2012
				Sheet	1 of 1